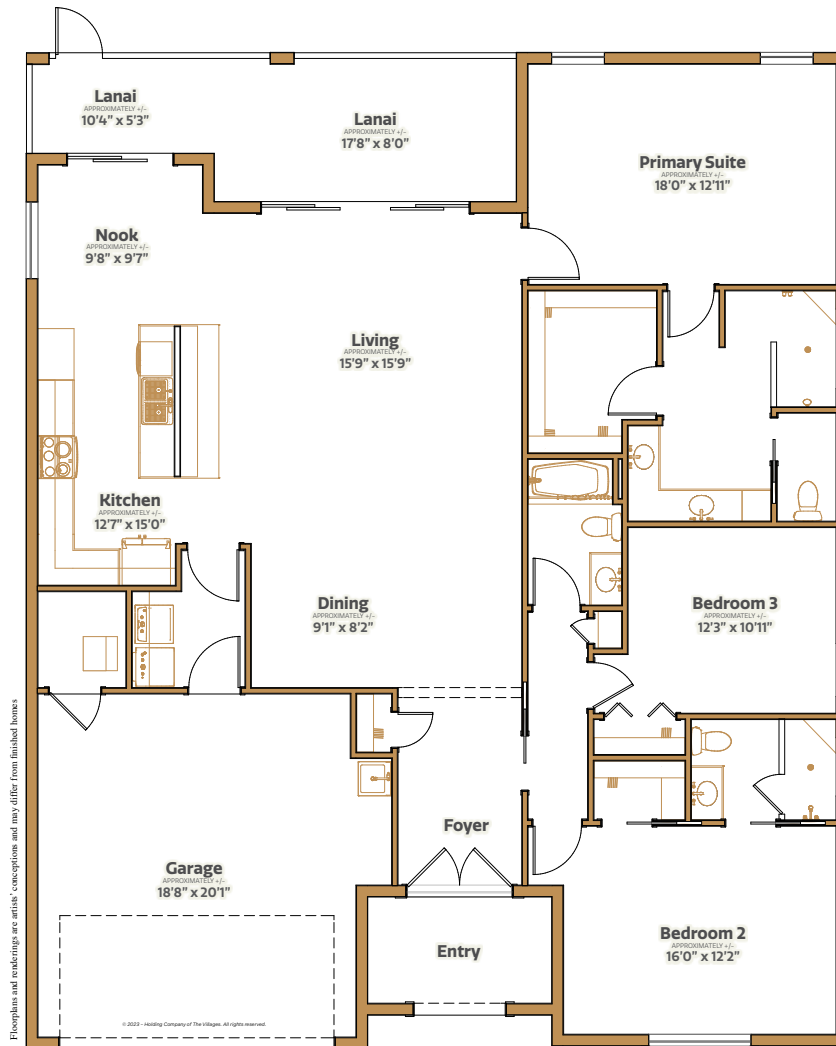


# Fast Break



3 bed | 3 bath | 2 car garage | 2763 total sq. ft. | 2021 sq. ft. under air



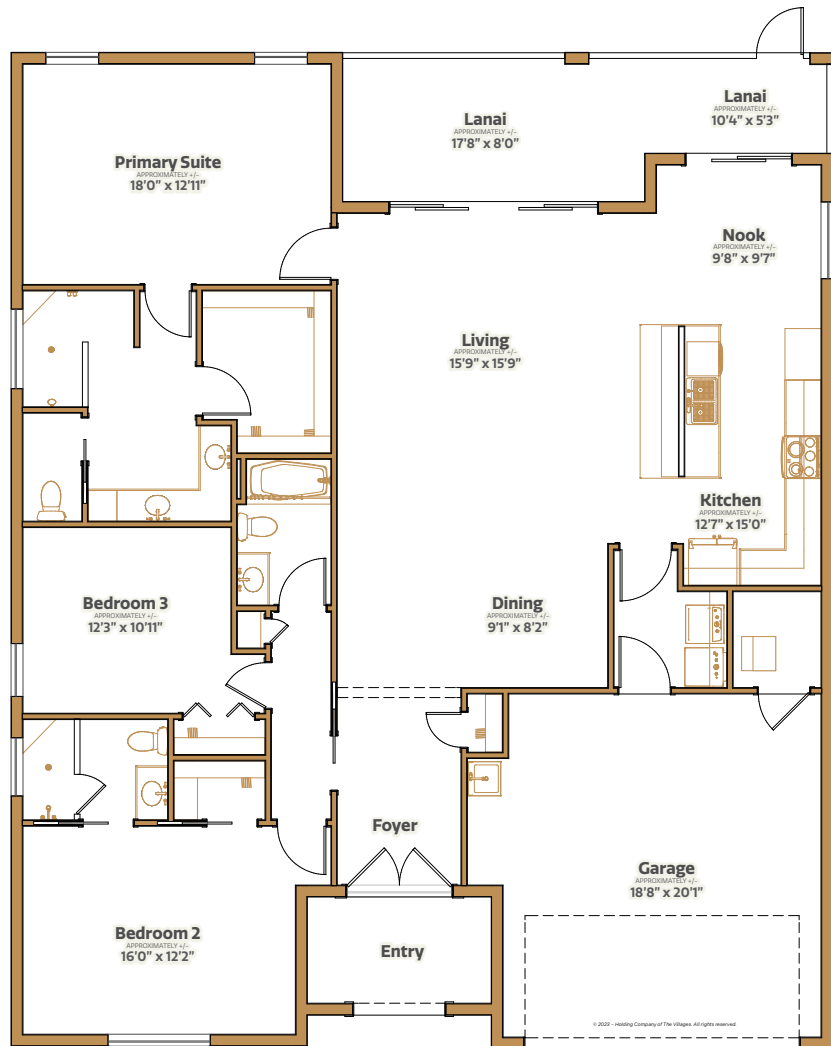
# Middleton

# Fast Break



THE RANGE HOME SERIES

3 bed | 3 bath | 2 car garage | 2763 total sq. ft. | 2021 sq. ft. under air



Floorplans and renderings are artists' conceptions and may differ from finished homes.

# Middleton

# The Range HOME SERIES

---

## INTERIOR

- Central air conditioning and heat
- Water heater
- Smoke detection system
- Wiring for data and cable
- Ceiling fan outlets in selected rooms
- Light fixtures
- Laundry tub with faucet
- Rocker switches
- Interior doors
- Wood cabinetry
- Ventilated closet shelving

## KITCHEN

- Stainless steel appliances: refrigerator, range, microwave over range, and dishwasher
- Garbage disposal
- Double bowl sink with faucet

## BATH

- Lavatories and toilets
- Faucets and shower accessories
- Tile showers
- Towel bars and tissue holders
- Bath exhaust fans

## STRUCTURAL

- Concrete construction with painted cementitious finish and interior foam board insulation

## EXTERIOR

- Architectural shingles
- R-38 ceiling insulation
- Insulated low-e windows
- Fiberglass entry doors
- Screened lanai
- Garage door with electric opener
- Underground utilities
- Push button door chime
- Weatherproof electrical outlets
- Exterior hose bib
- Landscaping with WiFi capable controller and rain sensor irrigation system
- St. Augustine grass
- Lighting
- Concrete driveway and sidewalk
- Covered entryway
- Exterior lighting at entry

## A VARIETY OF POPULAR FEATURES AVAILABLE IN SOME HOMES

- Tile flooring
- Window treatments
- Ceiling fans
- Quartz or solid surface countertops
- Golf car garage
- Washer/dryer

---

# Middleton

*A new place to call home.*

MyMiddleton.com |   